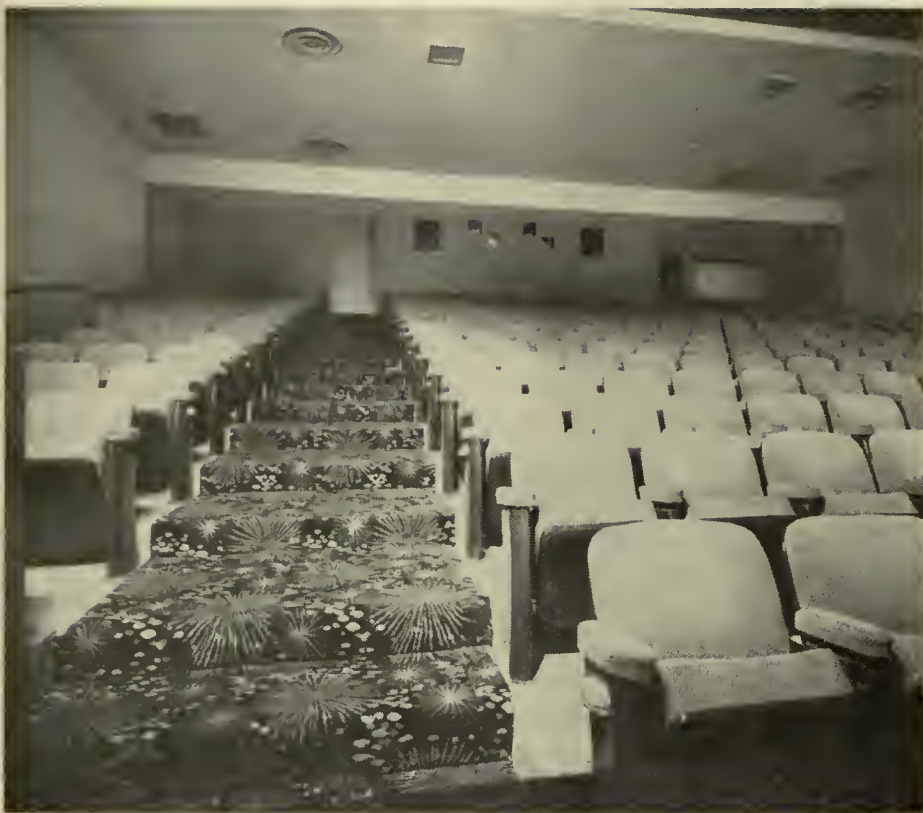


## STAR THEATRE . . . Cont.



The loge section in the Star provides 440 luxury reclining chairs—that is, the backs recline in response to pressure. There are 16 rows of seating with the chairs 38 inches back to back. At the top right is a cry room, equipped with electrical outlets for bottle warmers, and other facilities for comforts of the very young.

tres Inc., and many other independent theatre owners.

General construction is of reinforced concrete blocks, although the outside foyer and lobby walls have been finished in natural stone. This natural stone treatment has also been carried out in the box-office which is centered in the outer lobby area. Carrying out the star motif, an elaborate star design has been placed in the terrazzo surface of the outer lobby. In addition, the carpeting which was specially created for the theatre has a starburst and nebulae effect. The Alexander Smith Co. mills rushed the 750 yards of carpeting to Oceanside by air to meet the grand opening deadline. Light fixtures in the inner foyer and lobby were designed with the theatre's name in mind—starbursts with the points reaching out six feet.

Patrons will move from the lobby to the auditorium over two semicircular ramps leading directly to a cross-over aisle which separates 440 loge seats from the rest of the auditorium. The area between the ramps has been given over to theatre offices. The loges have a rise of 15 feet. The chairs are deep-cushioned, padded arm rest "Relax Recliner," a chair which reclines in response to pressure against the back.

Looking forward to attracting the young family trade, the theatre has a cry room.

**CREDITS:** Carpeting: Alexander Smith • Projectors: Simplex • Seating: Heywood-Wakefield • Sound: Altec.



## THE TRULY AMAZING ASHCRAFT SUPER CINEX

LIGHT PROJECTING SYSTEM

**140-165 AMPERES • 40%**

MORE LIGHT THAN EVER BEFORE

<b>NEW</b>	<b>13.6</b>	MM	HIGHER POWER!
	<b>F1.6</b>	CARBON ARC	LOWER COST!
			FASTER SPEED OPTICS!
			CONTROLLED FILM HEAT!

**NOW YOUR DRIVE-IN CAN HAVE THE BRILLIANT  
LIGHT OF INDOOR THEATRES**

U. S. Distribution through INDEPENDENT THEATRE SUPPLY DEALERS • Foreign: WESTREX CORPORATION • Canada: DOMINION SOUND EQUIPMENTS, LTD.

**C. S. ASHCRAFT MANUFACTURING CO., INC.**

36-32 THIRTY-EIGHTH STREET, LONG ISLAND CITY 1, NEW YORK